

TANDEM plus BLUMOTION



Lateral stabilizer for 563/569

Application



Description

- Increases lateral stability
- Synchronizes left and right runners to prevent drawer racking
- Ideal for wide applications using TANDEM 563/569 H/., and F/A series
- Does not increase load capacity

Specifications

- Frameless and blocked-out face frame applications **229** (9") to **686** (27") length drawers
- Face frame applications with rear attachment **305** (12") to **533** (21") length drawers
- Recommended for opening widths **610** (24") and wider



Lateral stabilizer set



Set includes:

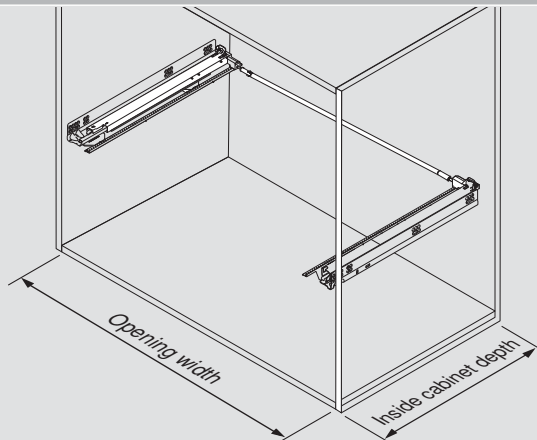
- Pinion housing (qty 2)
 - Gear rack with locating tabs (qty 2)
 - Linkage rod, length **1054** (41-1/2")
 - Pinion adapter (qty 2)
 - Locking clip (qty 2)
- Installation instructions

Part no.

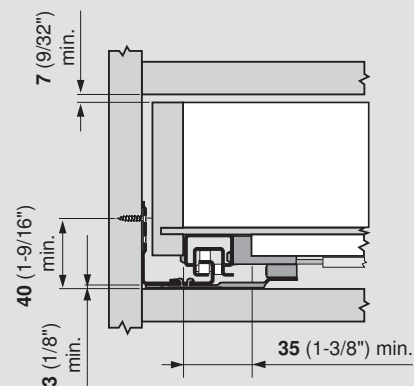
Lateral stabilizer set

ZST.686TU01

Space requirements



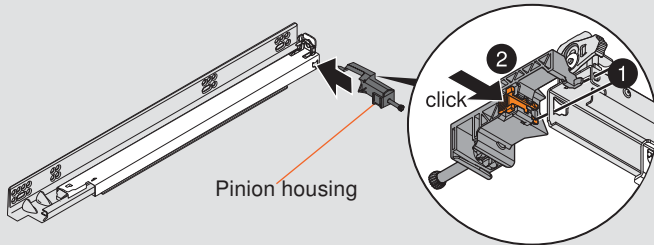
- Maximum opening width **1352** (53-7/32")
- Minimum inside cabinet depth = setback + runner length + **18** (23/32")



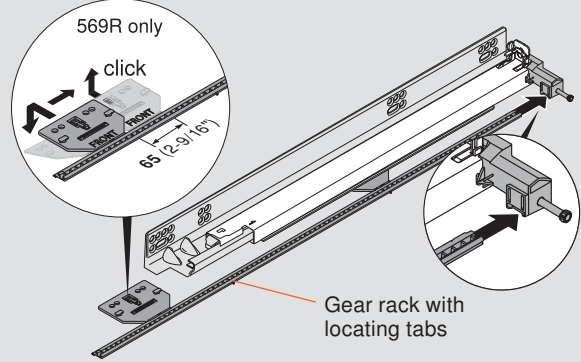
NOTE: TANDEM runners will sit **3** (1/8") higher when using the lateral stabilizer in bottom mount applications and may have to be raised for some bottom mount drawer applications using SERVO-DRIVE

Step 1 – Attach left and right pinion housings

- 1 Insert locating pins into TANDEM runner
- 2 Press orange locking clips to lock into place

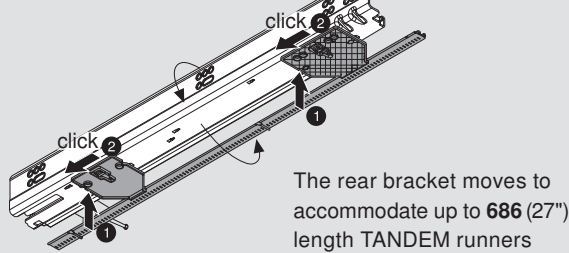


Step 2 – Slide gear racks into pinion housings

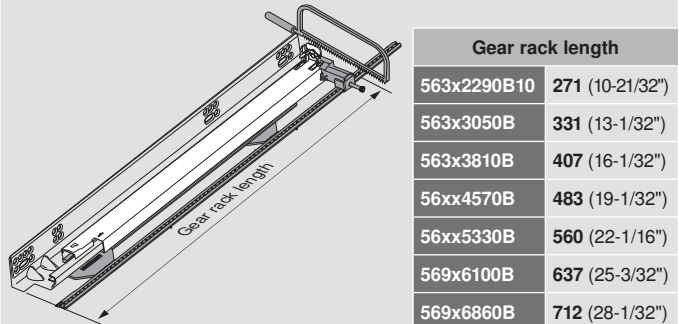


Step 3 – Install gear racks

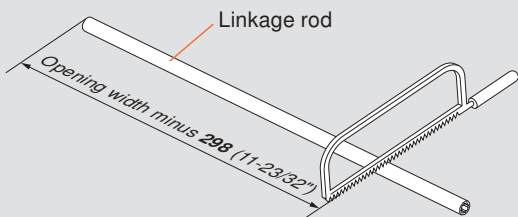
- 1 Insert locating tabs into cut-outs on bottom of runners
- 2 Slide backward to lock into place



Step 4 – Cut gear racks to length

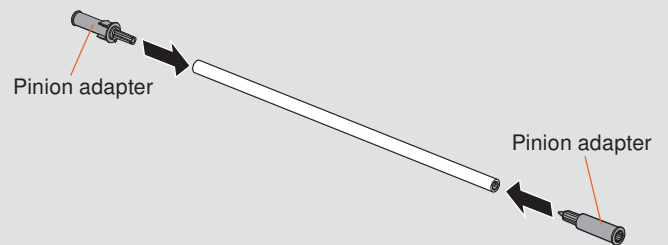


Step 5 – Cut linkage rod to length



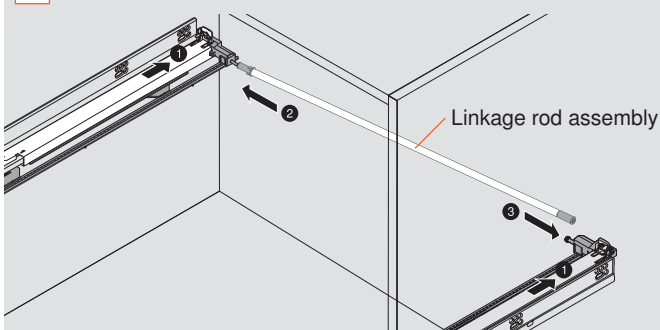
Linkage rod length equals opening width minus **298** (11-23/32")

Step 6 – Press pinion adapters into linkage rod



Step 7 – Install linkage rod assembly

- 1 Close drawer runners
- 2 Slide linkage rod assembly left onto left pinion
- 3 Slide right pinion adapter onto right pinion



Step 8 – Install locking clips

Install locking clips on both adapters

