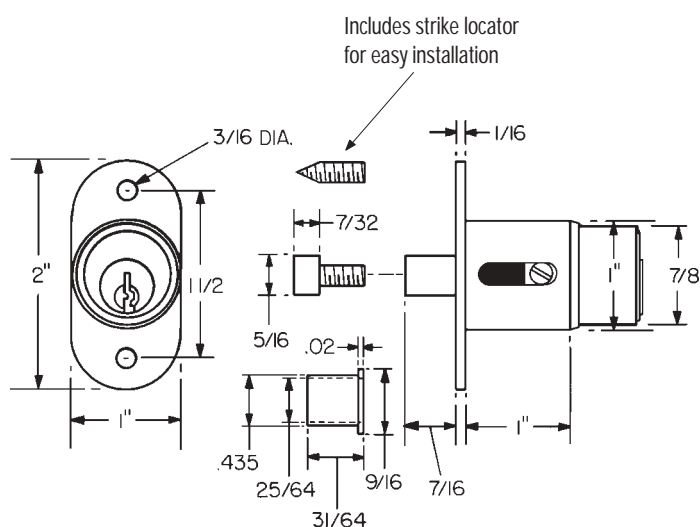
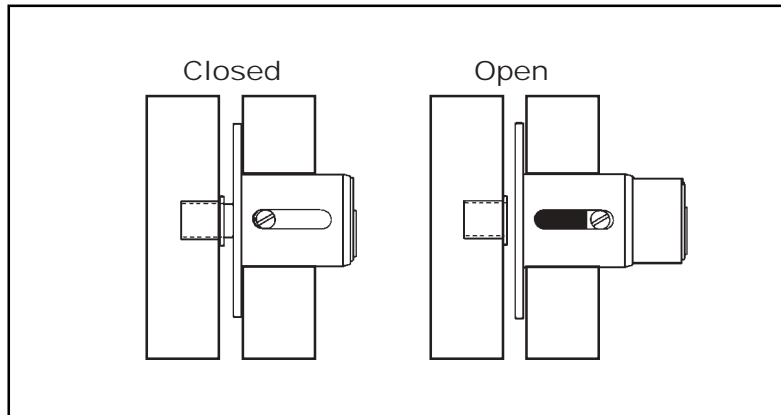


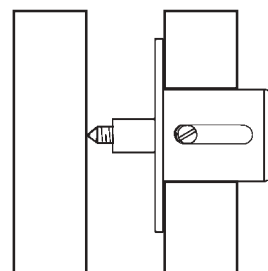
Installation Instructions

300SD

Typical Installation

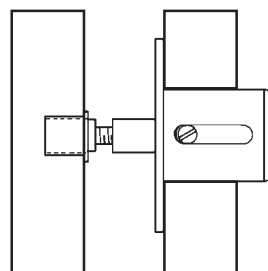


Strike Locator



Use strike locator to correctly mark location to install strike.

Bolt Extender



Use optional bolt extender for excessive gaps in bypassing doors.

Title

Installation instructions for 300SD series sliding door lock

Series

300SD

Barrel Length

1"

Bolt type

Plunger

Mounting

Surface

Revision Date

06/2004

OLYMPUS
LOCK, INC.