



Floating Vanity Bracket Shop Instructions

[FVB-1521, FVB-2129, FVB-2942, FVB-4256]

Tools Needed

Cordless impact driver
Phillips drive bit

Parts Included

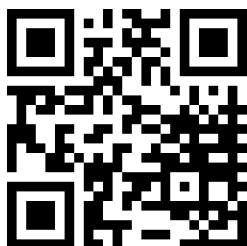
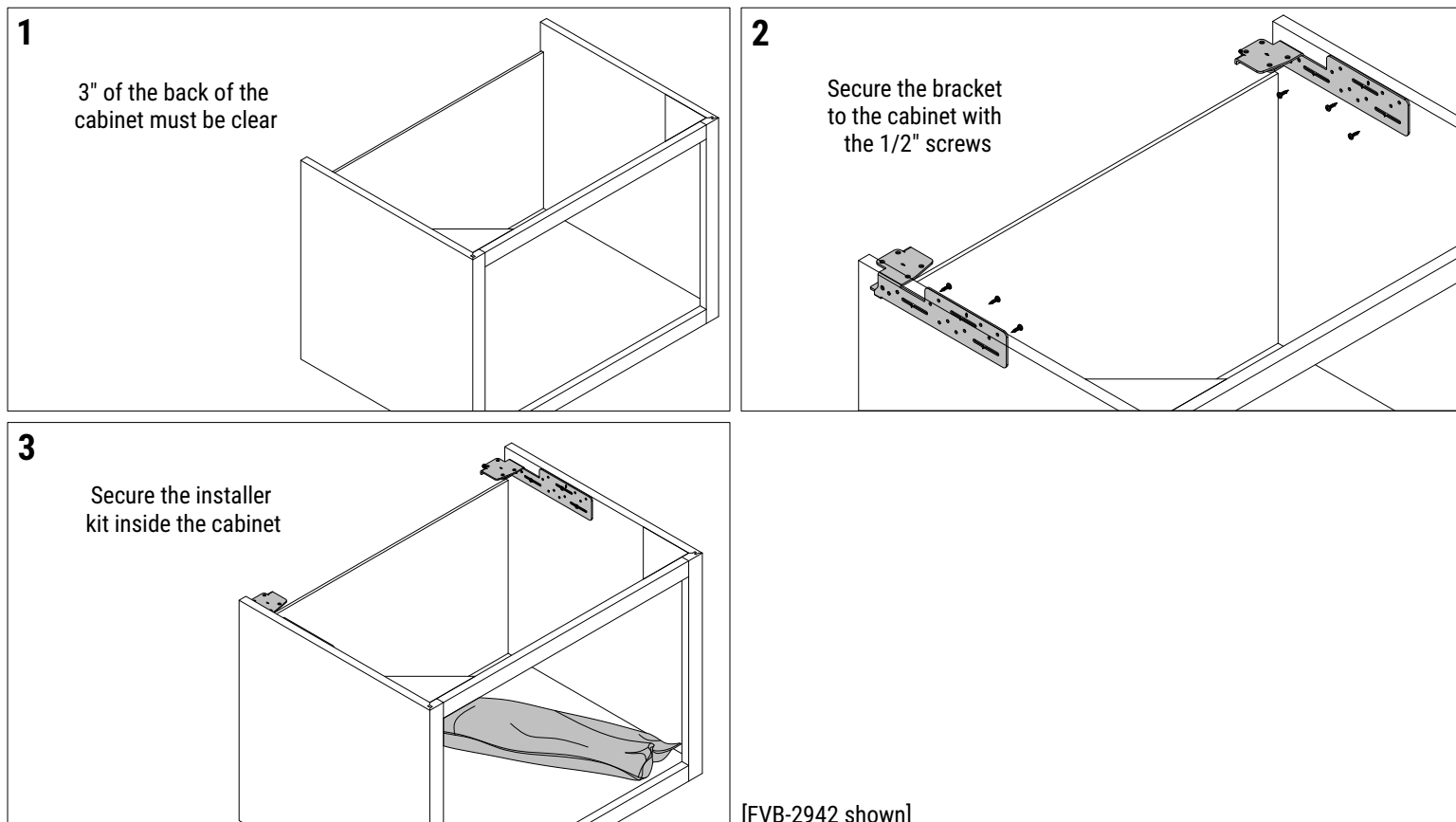
[2] Bracket arms
[6] 1/2" screws

Installation Instructions

Step 1: The top 3" of the mounting side of the vanity cabinet must be open (no back) to leave room for the floating vanity bracket system. Any center partitions must have a 1-1/2" x 3" notch at the top. If the cabinet has not been constructed this way, cut and remove a portion of the cabinet back and partitions to accommodate the bracket system.

Step 2: Orient the bracket arm with the arrows up and back. Place it against the inside surface of the cabinet side, and align the top and back edges of the arm with top and back edges of the cabinet side. Secure the arm to the cabinet side by driving a 1/2" screw through all three long slots on the bracket arm, aligning the screw with the small notch on the bottom edge of the slot. Repeat for each arm.

Step 3: Tape, staple, or otherwise secure the installer kit inside the vanity cabinet.



Discover more products by visiting us online. Just scan this **QR code** or visit **www.innovashelf.com** to find inspiration photos, bracket specs, other products, and information about purchasing more brackets or buying wholesale.